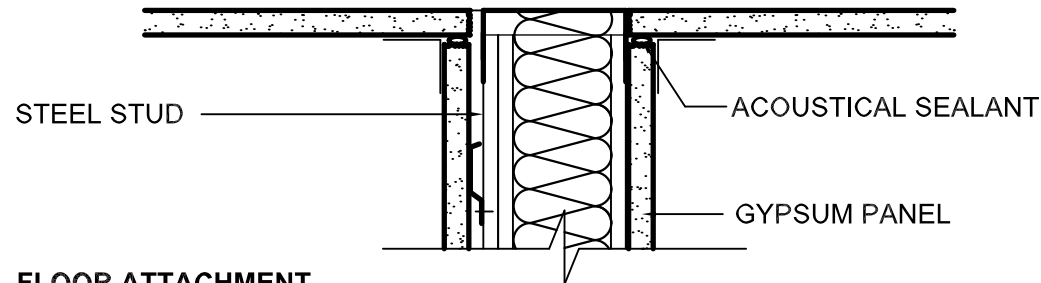
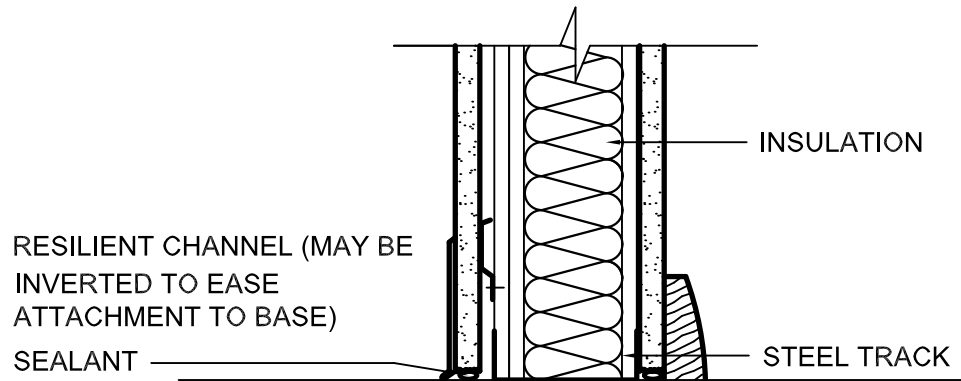


CEILING ATTACHMENT



FLOOR ATTACHMENT



TOP SET

WOOD

GENERAL NOTES:

1. Detail is derived from **ASTM C-754 Standard Specification for Installation of Steel Framing Members to Receive Screw-Attached Gypsum Panel Products.**
2. Install resilient channel with mounting flange down.
3. Install with slotted holes over the framing members.
4. Installation per **ASTM C-754 Standard Specification for Installation of Steel Framing Members to Receive Screw-Attached Gypsum Panel Products.**
5. Detail intended for interior nonstructural applications.
6. Stud depth, spacing and thickness based on height of wall and design load. Consult **SFIA Technical Guide for Cold-Formed Steel Framing Products for limiting heights.**
7. Finish gypsum panel joints with appropriate joint finish system.
8. Gypsum panels type and thickness as required by required performance.

DISCLAIMER: This detail must not be used without a complete evaluation by the owner's design professional to verify validity of the design.